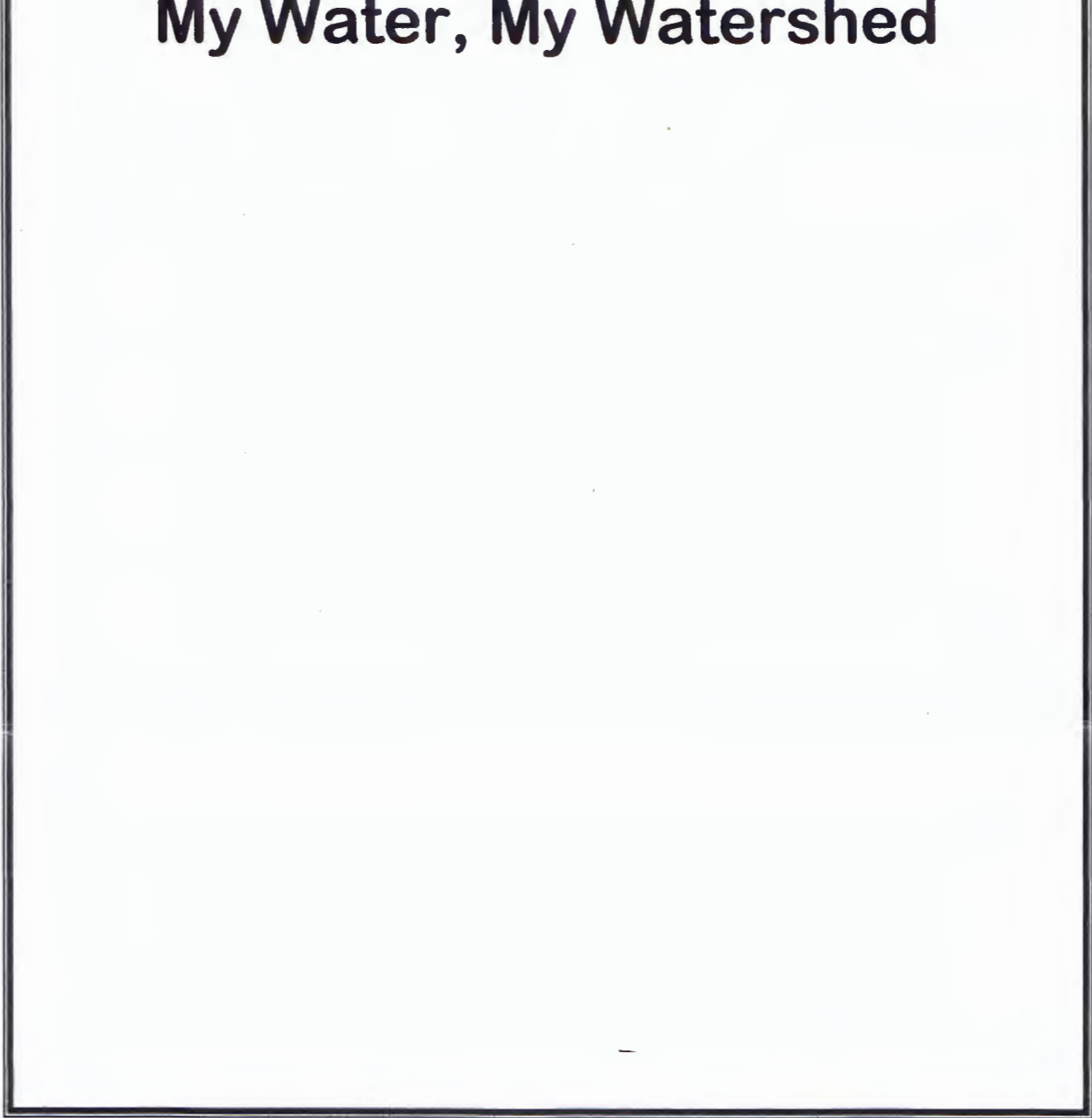


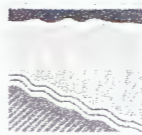
# My Water, My Watershed



## SCIENTIFIC JOURNAL

Name: \_\_\_\_\_

Date: \_\_\_\_\_



*Santa Fe*  
**WATERSHED**  
ASSOCIATION

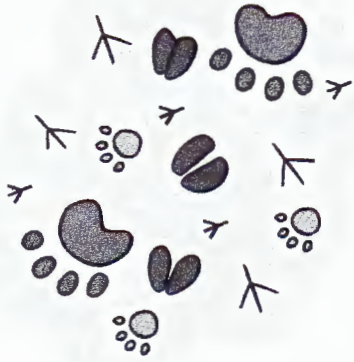
What do you see?

What do you hear?

What do you feel?

What do you smell?

Use this page to record your observations of wildlife and signs of wildlife on trail.



# What is an ecosystem?

List all living and non-living things

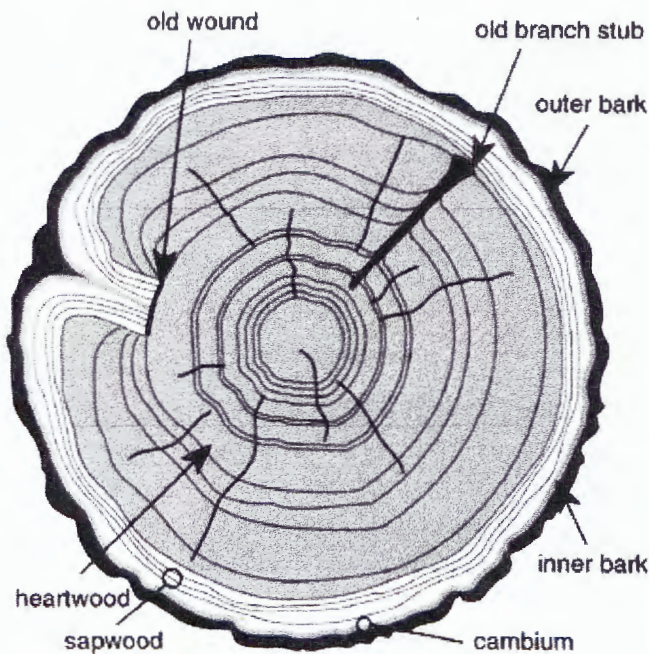
Biotic

Abiotic

# What is an Aquatic Macroinvertebrate?

Aquatic macroinvertebrates are animals that live in the water, are large enough to see without a microscope, and do not have a backbone.

*Sketch and label two aquatic macroinvertebrates that you found in the Santa Fe River:*



## Tree Rings

Yearly, trees add growth rings. **Dendrochronology** is the study of tree rings. The light-colored rings are put on in the growing season (spring-fall) and the dark-colored rings are put on in the non-growing season (winter).

What year is this year? \_\_\_\_\_

How old is your tree? \_\_\_\_\_

What year did your tree sprout? \_\_\_\_\_

How tall is your tree? \_\_\_\_\_

# Glossary

## Reservoir

A human-made lake used for storing water.

## Riparian

Located by the banks of a river, stream, or other body of water. Example: That cottonwood tree is in the riparian area.

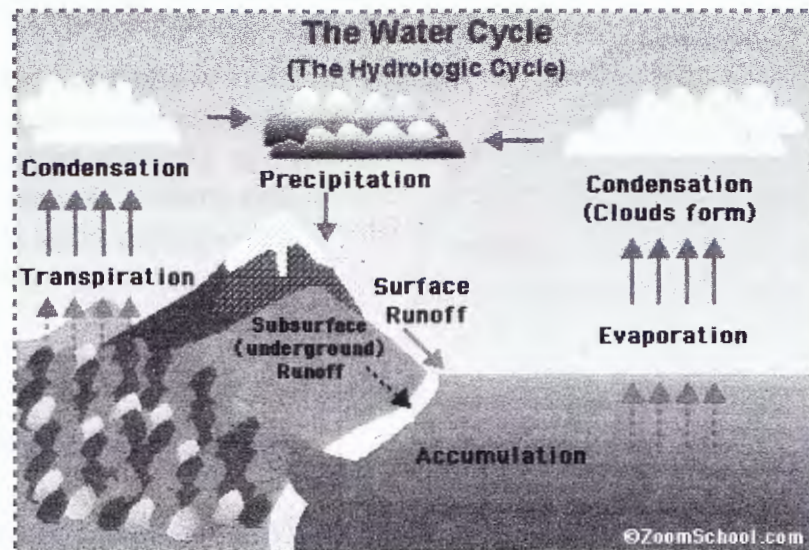
## Runoff

Water that drains into a river (or other body of water) from uncontrolled streams, drains, or sewage lines. There is runoff from agricultural irrigation water, snowmelt, rain, storms, etc.

## Tributary

A river or stream that flows into another stream, river, or lake.

**Watershed** The term given to the land that drains water into a particular stream, lake, or river. Example: Santa Fe River Watershed.



Thank you to the Santa Fe Watershed Association,  
City of Santa Fe Sangre de Cristo Water Division, and the U.S. Forest Service.